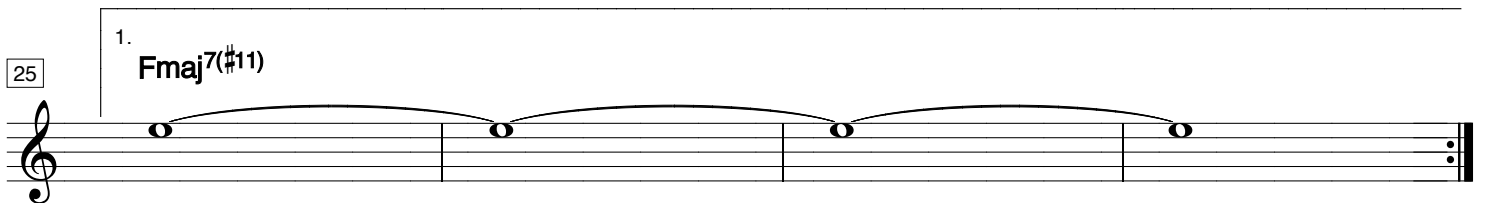
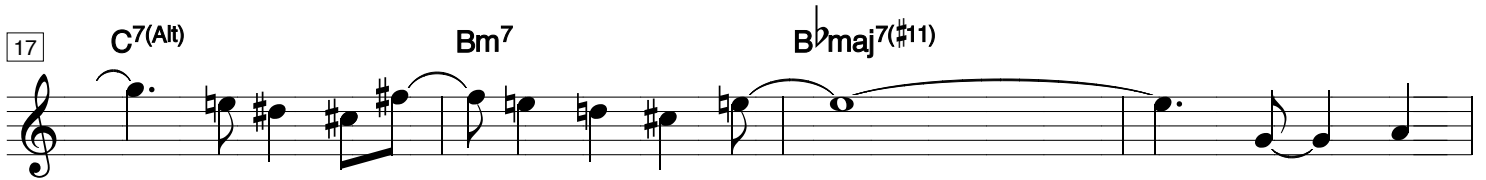
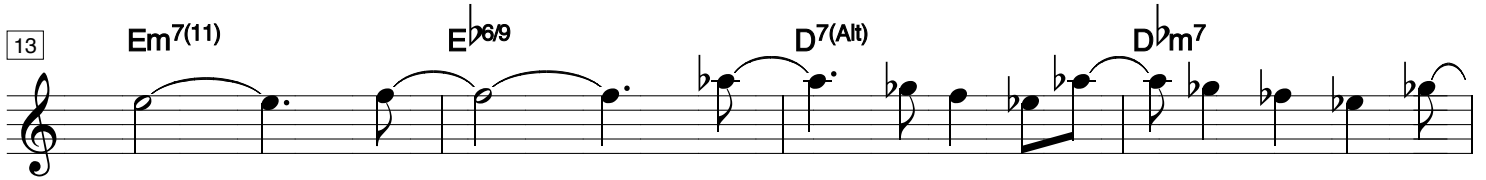
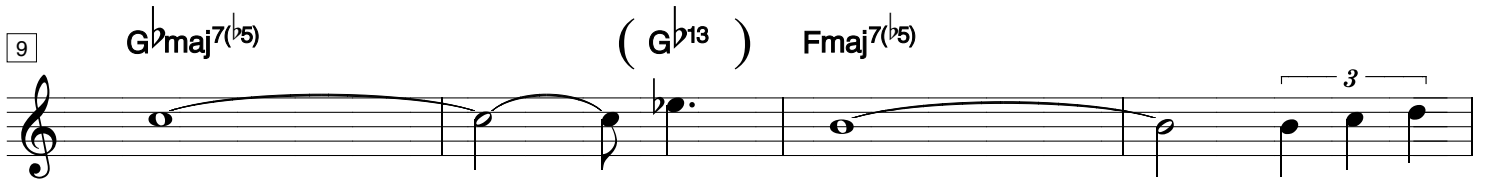
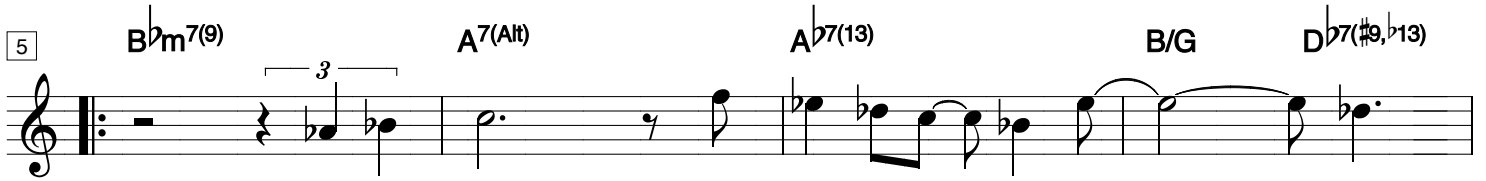


# Helen

1 Fmaj7(#11)



LOOSE SWING - MELODY ON CUE



29 <sup>2.</sup> Fmaj7(#11) Em<sup>11</sup> Fmaj7(#11) Em<sup>11</sup>

33 E<sup>b</sup>maj7(6/9) D7(alt) D<sup>b</sup>maj7(#11) C7(alt) Fmaj7(#11)



37 Fmaj7(#11) Em<sup>11</sup> Fmaj7(#11) Em<sup>11</sup>

open vamp.....last bar on cue

41 E<sup>b</sup>maj7(6/9) D7(alt) D<sup>b</sup>maj7(#11) C7(alt) Fmaj7(#11)